



Black Magic® Coal Slag

Quick cleaning Superior performance



40-60
Extra Fine

1-2 mil
1/8" Nozzle (min)
Surface cleaning
Removal of:
Light rust
Light coatings
Profile: Smooth
Industry Uses:
Automotive
Steel
Blast Result:
Brush off



30-60
Fine

1.5-2 mil
1/8" Nozzle (min)
Light Cleaning
Removal of:
Mill scale
Light coatings & rust
Profile: Slight
Industry Uses:
Automotive
Steel
Blast Result:
White Metal



20-40
Medium Fine

2-3 mil
3/16" Nozzle (min)
General Cleaning
Removal of:
Mill scale
Rust • Coatings
Profile: Moderate
Industry Uses:
New construction
Bridges • Tanks
Pipelines
Blast Result:
Near White to White Metal



16-40
Medium

3-4 mil
1/4" Nozzle (min)
General Cleaning
Removal of:
Medium to heavy coatings
Heavy mill scale & rust
Profile: Moderate - deep
Industry Uses:
Structural Steel
Bridges • Ships
Bridges
Blast Result:
Near White Metal



8-20
Coarse

4+ mil
5/16" Nozzle (min)
Heavy Cleaning
Removal of:
Heavy coatings & rust
Epoxy • Linings
Profile: Deep
Industry Uses:
Concrete • Ships
Water towers
Blast Result:
Commercial



Manufactured & Distributed by:
www.AbrasivesInc.com

GLEN ULLIN, ND • FRIDLEY, MN

Contact Our Team:
Sales@AbrasiveSinc.com



Black Magic® Coal Slag

Quick cleaning Superior performance

Black Magic® coal slag is a recycled by-product of lignite coal-fired power plants. Our slag is created from a hotter source which creates a harder material and conforms to environmental standards. The extensive screening process we use to size our slag results in more consistently sized particles that are less likely to clog equipment.

Hard angular particles Consistent weight & size No heavy metals Fast cleaning
 Excellent profile for coating adhesion Chemically inert Hardness - 6.5-7.5 Mohs <2% free silica

CARB & U.S. Navy QPL approved

Black Magic® users say it cleans faster, better and has less dust than other slag products.

Blast Media Additives

Dustnet® Liquid Dust Suppressant

Reduces up to 97% of nuisance dust and as much as 76% respirable dust during blasting. Proven effective with numerous abrasives.

Benefits:

Non-hazardous
 No special disposal requirements
 Settles dust closer to blast site
 Doesn't affect coating cohesion

Blastox®

Stabilizes lead in various industrial paints and spent abrasive waste. Offers One Step Lead Abatement technology.

Benefits:

Waste classified as non-hazardous
 Disposal in Class D landfill
 Pre-blended with most media
 Eliminates additional labor costs



Packaging

Jumbo Cells
 (approx 3,800 lbs)
 25, 50 & 80 lb bags

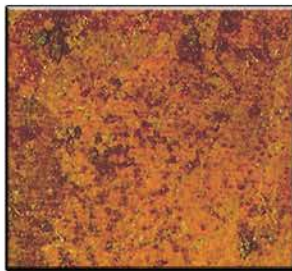
Delivery

Railcar • Pneumatic • Flatbed
 End Dump • Hopper Bottom • LTL

Orders ship within 24 hours
 Delivery in 48 hours
in most circumstances

Blast Cleaned Surface Examples

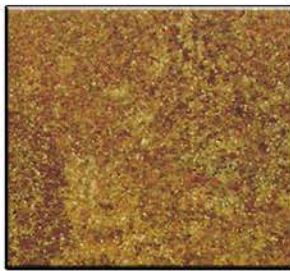
Images are viewed without magnification



Uncleaned

Mill scale has flaked off and complete rusting has occurred

For the complete guide to surface cleanliness & standards, visit www.SSPC.org



Brush-Off

SSPC-SP 7 • NACE No. 4

Free of all visible oil, grease, dirt, dust, loose mill scale, loose rust, and loose coating.

Tightly adherent mill scale, rust, and coating may remain on the surface (can't be removed by lifting with a dull putty knife after abrasive blast cleaning).



Commercial

SSPC-SP 6 • NACE No. 3

Free of all visible oil, grease, dirt, dust, mill scale, rust, coating, oxides, and corrosion products.

No more than 33% of random staining (light shadows, streaks, discoloration) caused by rust, mill scale or coating.



Near-White

SSPC-SP 10 • NACE No. 2

Free of all visible oil, grease, dirt, dust, mill scale, rust, coating, oxides, and corrosion products.

No more than 5% of random staining (light shadows, streaks, discoloration) caused by rust, mill scale or coating.



White

SSPC-SP 5 • NACE No. 1

Free of all visible oil, grease, dirt, dust, mill scale, rust, coating, oxides, and corrosion products

Main Office & Manufacturing:

4090 Hwy 49
 Glen Ullin, ND 58631
 800-584-7524



www.AbrasivesInc.com
sales@AbrasiveSInc.com

Office & Warehouse:

205 Osborne Rd
 Fridley, MN 55432
 800-716-9651